

Temperature Shocks and Economic Growth: Evidence from the Last Half Century[†]

By MELISSA DELL, BENJAMIN F. JONES, AND BENJAMIN A. OLKEN*

This paper uses historical fluctuations in temperature within countries to identify its effects on aggregate economic outcomes. We find three primary results. First, higher temperatures substantially reduce economic growth in poor countries. Second, higher temperatures may reduce growth rates, not just the level of output. Third, higher temperatures have wide-ranging effects, reducing agricultural output, industrial output, and political stability. These findings inform debates over climate's role in economic development and suggest the possibility of substantial negative impacts of higher temperatures on poor countries. (JEL E23, O13, Q54, Q56)

At least since Montesquieu's *The Spirit of Laws* (1750), which argued that an “excess of heat” made men “slothful and dispirited,” it has been debated whether temperature is, or is not, central to understanding economic development. In this paper, we use historical fluctuations in temperature within countries to identify its effects on aggregate economic outcomes. We use this approach to inform old debates about the role of temperature in economic development and new debates about the possible impacts of future warming.

The relationship between temperature and aggregate economic activity has traditionally been quantified using two approaches. One approach, emphasized in the growth and development literature, has examined the relationship between average temperature and aggregate economic variables in cross-sections of countries (e.g., Sachs and Warner 1997; Gallup, Sachs, and Mellinger 1999; Nordhaus 2006). In contemporary data, it is well known that hot countries tend to be poor, with national income falling 8.5 percent per degree Celsius in the world cross section (Dell, Jones, and Olken 2009). However, many argue that this correlation is driven by spurious associations of temperature with national characteristics such as institutional quality (e.g., Acemoglu, Johnson, and Robinson 2002; Rodrik, Subramanian, and Trebbi 2004).

*Dell: Department of Economics, Massachusetts Institute of Technology, 50 Memorial Drive, Cambridge, MA 02139 (e-mail: mdell@mit.edu); Jones: Kellogg School of Management, 2001 Sheridan Road, Evanston, IL 60208 (e-mail: bjones@kellogg.northwestern.edu); Olken: Department of Economics, Massachusetts Institute of Technology, 50 Memorial Drive, Cambridge, MA 02139 (e-mail: bolken@mit.edu). We thank Daron Acemoglu, Esther Duflo, Douglas Gollin, Michael Greenstone, Jonathan Gruber, Seema Jayachandran, Charles Jones, Peter Klenow, Ross McKittrick, William Nordhaus, Elias Papaioannou, Fabrizio Perri, Richard Tol, Carl Wunsch, four anonymous referees, and numerous seminar participants for helpful comments and suggestions.

[†] To comment on this article in the online discussion forum, or to view additional materials, visit the article page at <http://dx.doi.org/10.1257/mac.4.3.66>.

The second approach relies on micro evidence to quantify various climatic effects and then aggregates these to produce a net effect on national income. This approach is embedded within Integrated Assessment Models (IAM), which are utilized extensively in the climate change literature to model climate-economy interactions and form the basis of many policy recommendations regarding greenhouse gas emissions. A fundamental challenge for this approach is complexity. The set of candidate mechanisms through which temperature may influence economic outcomes is large and, even if each mechanism could be enumerated and its operation understood, specifying how they interact and aggregate poses substantial difficulties. The climate literature, at the micro level, suggests a wide array of potential temperature effects, including influences on agricultural productivity, mortality, physical performance, cognitive performance, crime, and social unrest, among other outcomes, many of which do not feature in current implementations of the enumerative models.¹

This paper takes an alternative approach. We first construct temperature and precipitation data for each country and year in the world from 1950 to 2003 and combine this dataset with data on aggregate output. We then examine the historical relationship between changes in a country's temperature and precipitation and changes in its economic performance. Our main identification strategy uses year-to-year fluctuations in temperature and precipitation to identify their effects.^{2,3} By examining aggregate outcomes directly, we avoid relying on a priori assumptions about what mechanisms to include and how they might operate, interact, and aggregate. By utilizing fluctuations in temperature, we isolate its effects from time-invariant country characteristics. Our approach also allows more nuanced insights. Beyond investigating the magnitude and locus of any effects, we can use the panel's distributed lag structure to inform whether temperature impacts national growth rates or simply the level of income.

We find three primary results. First, our estimates show large, negative effects of higher temperatures on growth, *but only in poor countries*. In poorer countries, we estimate that a 1°C rise in temperature in a given year reduced economic growth in that year by about 1.3 percentage points. In rich countries, changes in temperature do not have a robust, discernable effect on growth. Changes in precipitation have

¹On agriculture, see, e.g., Adams et al. (1990); Mendelsohn, Dinar, and Sanghi (2001); Schlenker and Roberts (2006); Deschenes and Greenstone (2007); and Guiteras (2007). On health, see, e.g., Curriero et al. (2002); Deschenes and Moretti (2009); Deschenes and Greenstone (2007); Gallup and Sachs (2001); and Sachs and Malaney (2002). On labor productivity, see, e.g., Huntington (1915), Meese et al. (1982), and Zivin and Neidell (2010). On crime and social unrest, see, e.g., Field (1992); Jacob, Lefgren, and Moretti (2007); and Miguel, Satyanath, and Sergenti (2004). Many other possible climate-economy channels are discussed in the Intergovernmental Panel on Climate Change (IPCC) 4th Assessment Report (IPCC 2007). Main users of IAM models acknowledge that the aggregate estimates require numerous, difficult modeling decisions. For example, the Stern report on the economics of climate change notes: "Making such estimates is a formidable task in many ways ... with the result that such models must make drastic, often heroic, simplifications along all stages of the climate-change chain. What is more, large uncertainties are associated with each element in the cycle. Nevertheless, the IAMs remain the best tool available for estimating aggregate quantitative global costs and risks of climate change" (Stern 2007, 145).

²The use of annual variation to estimate the impact of climate change was pioneered by Schlenker and Roberts (2006) and Deschenes and Greenstone (2007), who use annual county-level US data to estimate the impact of weather on US agricultural output. Several authors have also used higher frequency data, focusing on the GDP effect of rainfall in Africa as an instrument for conflict (Miguel, Satyanath, and Sergenti 2004) and to explain the African growth tragedy (Barrios, Bertinelli, and Strobl 2010).

³By convention, an annual realization of temperature and precipitation is termed "weather," while the word "climate" refers to the long-run distribution of temperature and precipitation. This paper thus emphasizes weather variation, although Section IV considers historical variation at longer time scales and along a path where the world is becoming warmer.

relatively mild effects on national growth in both rich and poor countries.⁴ We find broadly consistent results across a wide range of alternative specifications.

Second, to interpret these effects, one can distinguish two potential ways temperature could affect economic activity: influencing the *level* of output, for example, by affecting agricultural yields; or influencing an economy's ability to *grow*, for example, by affecting investments or institutions that influence productivity growth. By looking at multiple lags of temperature, we can examine whether shocks appear to have temporary or persistent impacts on economic output, and thus whether temperature has level or growth effects (or both). Our results provide some suggestive evidence, depending on the specification, that higher temperatures may reduce the growth rate in poor countries, not simply the level of output. Since even small growth effects have large consequences over time, growth effects—if they persist in the medium run—would imply large impacts of warming.

Third, we find evidence that temperature affects numerous dimensions of poor countries' economies, and in ways consistent with possible growth effects. While agricultural output contractions appear to be part of the story, we also find adverse effects of hot years on industrial output. Moreover, higher temperatures lead to political instability in poor countries, as evidenced by irregular changes in national leaders, and this political instability could plausibly reduce growth rates.⁵ These effects sit outside the primarily agricultural focus of much economic research on climate change and underscore the challenges in building aggregate estimates of climate impacts from a narrow set of channels. They are consistent with other recent work that suggests that temperature can have broad impacts outside of agriculture (Hsiang 2010). These effects may also help explain how temperature might affect growth rates in poor countries, not simply the level of output.

These results are identified using short-run fluctuations in temperature and precipitation, whereas the long-run effects of climate may be different. For example, in the long run, countries may adapt to a particular temperature, mitigating the short-run economic impacts that we observe. This type of adaptation may explain why our estimates of short-run economic impacts of temperature shocks are larger than what the overall cross-sectional relationship between temperature and income across the world would imply (see Section V). Alternatively, sustained climatic changes may have additional long-run effects on dimensions, such as water tables, soil quality, and health, producing larger impacts (e.g., Meehl, Tebaldi, and Nychka 2004).⁶

Although our approach cannot fully overcome these challenges, we can make some headway in exploring potential impacts of shifts in climate by examining medium-term temperature shifts within countries. Mean global land temperatures have risen nearly 1°C since 1970 (Brohan et al. 2006), but countries have not warmed equally. We therefore examine whether those countries that experienced

⁴Precipitation does show positive effects on agricultural output in poor countries, as discussed in Section III.

⁵The idea that climate shocks can affect political institutions is consistent with Brückner and Ciccone (2011), which shows that negative rainfall shocks lead to an increased probability of democratization in sub-Saharan Africa. Burke and Leigh (2010) also find that output contractions associated with weather shocks affect the timing of democratic change.

⁶In the context of future global climate change, other factors, such as changing sea levels, increasing frequency of natural disasters, and issues of biodiversity, may create additional costs not captured here (IPCC 2007; Nicholls and Leatherman 1995).

the largest climatic shifts between early and late periods in our sample had the largest shifts in their growth rates. Though this approach has less statistical power than using annual variation, the estimated effects of increased temperature over 10- or 15-year time horizons are similar to our annual panel estimates, showing substantial negative effects in poor countries. The decline in statistical precision with these medium-term results means that they should be interpreted with more caution than the annual panel data results, but the fact that they appear consistent is suggestive that the effects may persist at least over the medium term.

Our evidence suggests specific directions in which IAMs could be modified to better match the historical evidence. The two key distinctions between our evidence and the assumptions in most IAM models are that our estimates show striking differences between rich and poor countries; and our estimates explicitly allow growth effects of higher temperatures (for example, on TFP growth), not just level effects. Incorporating these effects in aggregate climate-economy models would help them predict long-run output paths that are consistent with the evidence in the short and medium run.

Our results also inform the older debate over temperature's role in economic development. Climatic theories of development have a long history, with prominent examples dating to Huntington (1915), Montesquieu (1750), and even to Ibn Khaldun's 14th Century *Muqaddimah* (Gates 1967). Yet, even with contemporary analysis, there remains substantial debate over temperature's aggregate effects (e.g., Acemoglu, Johnson, and Robinson 2002; Sachs 2003). Our estimates identify a substantial, contemporary causal effect of temperature on the development process, providing explicit evidence that temperature affects not only numerous subcomponents in an economy, but aggregates into substantial impacts on national output.

The remainder of the paper is organized as follows. Section I introduces the data and provides descriptive statistics. Section II describes the estimation strategy, presents the main results, and considers a number of robustness checks. Section III considers channels that may link temperature change to national output. Section IV estimates the effects of longer run temperature shifts. Section V relates the historical panel estimates to the cross-sectional relationship between temperature and income, and discusses some implications of the results for understanding potential economic effects of climate change. Section VI concludes.

I. Data and Descriptive Statistics

A. Data

The historical weather data are taken from the *Terrestrial Air Temperature and Precipitation: 1900–2006 Gridded Monthly Time Series, Version 1.01* (Matsuura and Willmott 2007). This dataset provides worldwide (terrestrial) monthly mean temperature and precipitation data at 0.5×0.5 degree resolution (approximately $56\text{km} \times 56\text{km}$ at the equator). Values are interpolated for each grid node from an average of 20 different weather stations, with corrections for elevation.

We use geospatial software to aggregate the weather data to the country-year level. Our main specifications use population-weighted average temperature and

precipitation, where the weights are constructed from 1990 population data at 30 arc second resolution (approximately 1km at the equator) from the *Global Rural-Urban Mapping Project* (Balk et al. 2004). We also consider averaging based on geographic area, which produces broadly similar weather variables for most countries.⁷ Online Appendix I presents additional details about the temperature and precipitation data.

For economic data, we primarily use the *World Development Indicators* (World Bank 2007). We focus on the panel of 125 countries with at least 20 years of GDP data in the *World Development Indicators*, and consider other samples as robustness checks. We also consider economic growth data from the *Penn World Tables Version 6.2* (Heston, Summers, and Aten 2006) as a robustness check and find very similar results. We use the *World Development Indicators* as our primary dataset given recent concerns with high frequency PWT data (Johnson et al. 2009).

B. Descriptive Statistics

Figure 1 summarizes temperature (panel A) and precipitation (panel B) data for each country in the sample, plotted against log per capita GDP in the year 2000. For each country, the circle symbols represent the mean levels of temperature and precipitation in the first decade of our sample (1950–1959), the plus symbols represent the mean levels in the last decade of our sample (1996–2005), and the gray lines indicate the range of annual mean levels we observe for that country. On average, our data show that the world has become about 1°C warmer between the early and late parts of our sample. The warming trend, which is concentrated since the 1970s, is well-documented (e.g., Brohan et al. 2006).

Panel A of Figure 1 shows the tremendous temperature variation across countries. The hottest country in the world is Mauritania, with an average population-weighted temperature of 28.4°C, and the coldest is Mongolia, with an average population-weighted temperature of –1.77°C. Figure 1 also shows the strong relationship between temperature and per capita income, with hot countries tending to be poor and cold countries rich. This relationship has been known since at least the eighteenth century (Montesquieu 1750) and has been further established using sub-national data (Nordhaus 2006). The exceptions to this rule fall into two main groups: oil states of the Middle East, such as Qatar and Kuwait, which are hot and wealthy; and Communist/post-Communist states, such as Mongolia and North Korea, which are cold and poor. On average, a simple cross-section regression in the year 2000 shows that a 1°C increase in average temperature predicts a fall in per capita income by 0.085 log points (i.e., about 8 percent).

Looking at variability within countries, we see fluctuations in annual mean temperatures, with the difference between the maximum and minimum annual mean temperature within a country averaging 2.2°C in our baseline sample.⁸ Thus, the

⁷Countries where the weighting scheme makes a substantial difference are those with large, sparsely populated areas with unusual climates: Russia (Siberia), Canada (the Arctic and sub-Arctic areas), the United States (Alaska), and Australia (central Australia).

⁸This max-min difference in annual means within countries ranges between 1.3°C and 3.4°C for 95 percent of countries in our baseline sample.

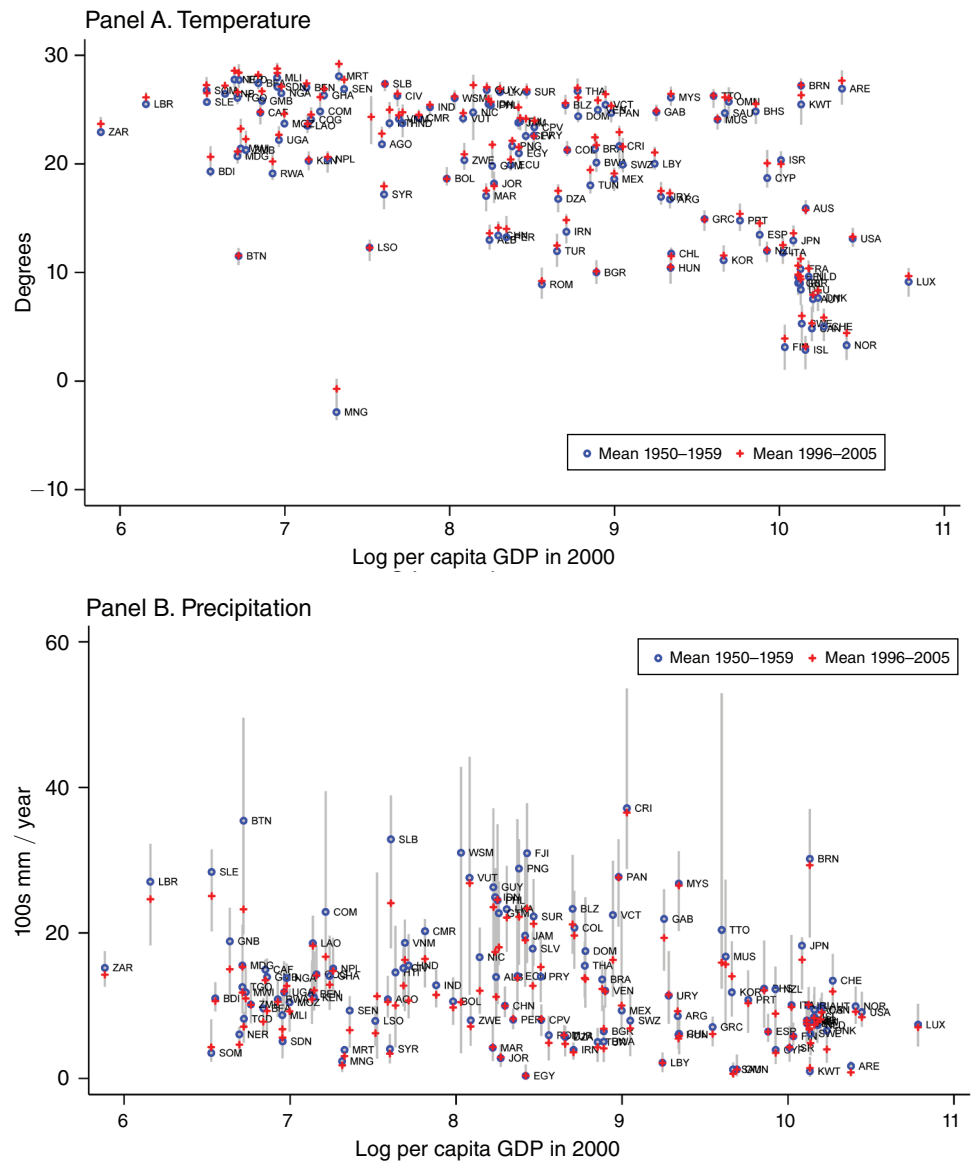


FIGURE 1. CHANGES AND VARIABILITY IN TEMPERATURE AND PRECIPITATION

Notes: These graphs present data on each country's temperature (panel A) and precipitation (panel B), plotted against per capita GDP from the World Development Indicators (WDI) in the year 2000. For each country, the circle symbols represent the mean level of temperature/precipitation in the first decade of our sample (1950–1959), the plus symbols represent the mean level of temperature/precipitation in the last decade of our sample (1996–2005), and the gray lines indicate the range of annual temperature/precipitation levels we observe for that country during our sample period. Country averages are calculated using population weights, as discussed in the text.

max-min variation within countries is more than twice the average increase in temperature observed over the period and reasonably similar to estimated global temperature increases expected to occur over the next century. Figure 1 further shows that, while there tend to be larger temperature fluctuations in cooler countries,

TABLE 1—OBSERVED TEMPERATURE AND PRECIPITATION VARIATION, 1950–2003

	Proportion of country-years with temperature [...] degrees above/below country mean					
	0.25	0.50	0.75	1.00	1.25	1.50
Raw data	0.573	0.299	0.144	0.064	0.028	0.011
After removing worldwide year fixed effects	0.511	0.215	0.085	0.032	0.013	0.005
After removing region \times year and poor \times year fixed effects	0.448	0.153	0.051	0.018	0.008	0.002

	Proportion of country-years with precipitation [...] 100 mm units above/below country mean					
	1	2	3	4	5	6
Raw data	0.480	0.229	0.121	0.070	0.042	0.027
After removing worldwide year fixed effects	0.494	0.221	0.113	0.062	0.038	0.024
After removing region \times year and poor \times year fixed effects	0.462	0.213	0.106	0.058	0.032	0.021

the upward trend in temperature has occurred globally with similar magnitude in both hot and cold countries.

Examining the data on precipitation in panel B of Figure 1 shows substantial annual variability in precipitation in all but the very driest countries. However, there is no clear relationship between the level of precipitation and the level of per capita income in 2000.

To examine the variability further, Table 1 documents the extent of temperature and precipitation fluctuations within countries. While the average difference (across all countries) between the hottest and coldest year is 2.2°C (Figure 1), a country's temperature deviates more than 1°C from the country mean approximately once every 15 years. Precipitation is more volatile, with deviations from mean rainfall of about 400–500 millimeters (mm) appearing once every 15 years. When common global or region-specific year fixed effects are removed, these deviations become somewhat more modest.

II. The Effect of Temperature Fluctuations on Economic Activity

In this section, we develop the empirical framework for the analysis of temperature shocks, present our main results, and consider a variety of robustness checks.

A. Empirical Framework

Our empirical framework follows the derivation in Bond, Leblebicioglu, and Schiantarelli (2010). To fix ideas, consider the following simple economy:⁹

$$(1) \quad Y_{it} = e^{\beta T_{it}} A_{it} L_{it}$$

⁹Here, we focus on this simple production model. Online Appendix II extends the reasoning developed here to more general dynamic panel models that incorporate richer lag structures and lagged dependent variables.

$$(2) \quad \Delta A_{it}/A_{it} = g_i + \gamma T_{it},$$

where Y is aggregate output, L measures population, A measures labor productivity, and T measures weather. Equation (1) captures the *level effect* of weather on production, e.g., the effect of current temperature on crop yields. Equation (2) captures the *growth effect* of weather, e.g., the effect of temperature on features, such as institutions that influence productivity growth.

Taking logs in the production function and differencing with respect to time, we have the dynamic growth equation

$$(3) \quad g_{it} = g_i + (\beta + \gamma)T_{it} - \beta T_{it-1},$$

where g_{it} is the growth rate of per-capita output. The “level effects” of weather shocks on output, which come from equation (1), appear through β . The “growth effects” of weather shocks, which come from equation (2), appear through γ .¹⁰

The growth equation in (3) allows separate identification of level effects and growth effects through the examination of transitory weather shocks. In particular, both effects influence the growth rate in the initial period of the shock. The difference is that the level effect eventually reverses itself as the weather returns to its prior state. For example, a temperature shock may reduce agricultural yields, but once temperature returns to its average value, agricultural yields bounce back. By contrast, the growth effect appears during the weather shock and is not reversed. A failure to innovate in one period leaves the country permanently further behind. The growth effect is identified in (3) as the summation of the temperature effects over time.

The above reasoning extends to models where temperature effects play out more slowly.¹¹ With more general lag structures in (1) and (2), the growth effect is still identified by summing the lagged effects of the weather fluctuation. This standard distributed-lag result is demonstrated formally in online Appendix II.

To estimate these effects, we run panel regressions of the form

$$(4) \quad g_{it} = \theta_i + \theta_{rt} + \sum_{j=0}^L \rho_j T_{it-j} + \varepsilon_{it},$$

where θ_i are country fixed effects, θ_{rt} are time fixed effects (interacted separately with region dummies and a poor country dummy in our main specifications), ε_{it} is an

¹⁰ Rather than first-differencing (1), one could integrate (2), producing a fully specified equation in the log level of output. However, as Bond, Leblebicioglu, and Schiantarelli (2010) note, this creates nonstationarity in both output levels (on the left-hand side) and accumulable factors (on the right-hand side). To avoid relying on cointegration assumptions for identification, Bond, Leblebicioglu, and Schiantarelli (2010) recommend first-differencing. Online Appendix II presents Monte Carlo results, which show that the first-differencing approach is very effective at correctly identifying both level effects (β) and growth effects (γ), whereas the integrated model with the log level of output as the dependent variable correctly identifies level effects (β) but does a poor job identifying growth effects (γ). Given these results, we focus on the model with growth as the dependent variable as in equation (3).

¹¹ For example, low temperatures in the latter part of one year could affect harvests the next year, which would generate a lagged level effect. Alternatively, a permanent shock to productivity could influence subsequent capital accumulation as the capital stock adjusted to its new steady state, which would generate a lagged growth effect. The key distinction is that, as in equation (3), level effects eventually generate equal and opposite responses through further lags, whereas growth effects do not. See online Appendix II.

error term clustered simultaneously by country and region-year (following the two-way clustering of Cameron, Gelbach, and Miller 2011), and T_{it} is a vector of annual average temperature and precipitation with up to L lags included.¹² In addition, we also consider variations of (4) that include interactions between weather variables and country characteristics. We have verified using Monte Carlo analysis that the specification in (4) produces unbiased estimates of both growth and level effects given the properties of our data. (See online Appendix II for more details.)

We begin by estimating (4) with no lags, focusing on the null hypothesis that temperature does not affect growth:

$$H_0(L = 0) : \rho_0 = 0.$$

A failure to reject this hypothesis would indicate an absence of both level and growth effects. In subsequent regressions with lags, following the conventions in the distributed-lag literature (see Greene 2000), we separately test the immediate effect of temperature,

$$H_0^1(L > 0) : \rho_0 = 0,$$

and the cumulated effect of temperature,

$$H_0^2(L > 0) : \sum_{j=0}^L \rho_j = 0.$$

The summation of the lag coefficients corresponds to the parameter γ , the growth effect, in the simple model above, as well as a more general concept of growth effects in models with longer lag structures, as demonstrated in online Appendix II. Online Appendix II also discusses generalizations of the empirical model and tests following Bond, Leblebicioglu, and Schiantarelli (2010) that allow for more general short-run dynamics. As discussed in the online Appendix, the results from the extended dynamic model are very similar to the results from the simpler model developed here.

B. Panel Results

Table 2 examines the null hypothesis that temperature does not affect growth, either through level effects or growth effects. It presents results from estimating equation (4) with no lags (i.e., imposing $\rho_j = 0$ for all $j > 0$; models with lags are examined in the next subsection). Column 1 of Table 2 shows a negative but statistically insignificant relationship between temperature fluctuations and growth on average across all countries. In column 2, we interact temperature with a dummy for a country being “poor,” defined as having below-median PPP-adjusted per capita GDP in the first year the country enters the dataset. The coefficient on the interaction

¹²The regions are Middle East/North Africa, sub-Saharan Africa, Latin America and Caribbean, Western Europe and offshoots, Eastern Europe and Central Asia, and Asia and Pacific Islands. See the online Appendix for a full list of countries.

TABLE 2—MAIN PANEL RESULTS

Dependent variable is the annual growth rate	(1)	(2)	(3)	(4)	(5)
Temperature	−0.325 (0.285)	0.261 (0.312)	0.262 (0.311)	0.172 (0.294)	0.561* (0.319)
<i>Temperature interacted with...</i>					
Poor country dummy		−1.655*** (0.485)	−1.610*** (0.485)	−1.645*** (0.483)	−1.806*** (0.456)
Hot country dummy				0.237 (0.568)	
Agricultural country dummy					−0.371 (0.409)
Precipitation			−0.083* (0.050)	−0.228*** (0.074)	−0.105** (0.053)
<i>Precipitation interacted with...</i>					
Poor country dummy			0.153* (0.078)	0.160** (0.075)	0.145* (0.087)
Hot country dummy				0.185** (0.078)	
Agricultural country dummy					0.010 (0.085)
Observations	4,924	4,924	4,924	4,924	4,577
Within R^2	0.00	0.00	0.00	0.01	0.01
R^2	0.22	0.22	0.22	0.22	0.24
Temperature effect in poor countries		−1.394*** (0.408)	−1.347*** (0.408)	−1.473*** (0.440)	−1.245*** (0.463)
Precipitation effect in poor countries			0.069 (0.058)	−0.0677 (0.073)	0.0401 (0.089)

Notes: All specifications use WDI data and include country FE, region \times year FE, and poor \times year FE. Robust standard errors are in parentheses, adjusted for clustering at parent-country level. Sample includes all countries with at least 20 years of growth observations. Poor is defined as a dummy for a country having below median PPP GDP per capita in its first year in the data. Hot is defined as a dummy for a country having above median average temperature in the 1950s. Agricultural is defined as a dummy for a country having above median share of GDP in agriculture in 1995. Temperature is in degrees Celsius and precipitation is in units of 100 mm per year.

***Significant at the 1 percent level.

**Significant at the 5 percent level.

*Significant at the 10 percent level.

between the “poor” dummy and temperature is negative and statistically significant, indicating substantial heterogeneity between poor and rich countries.¹³ As shown in the last row of the table (which reports the sum of the main effect of temperature and its interaction with the poor dummy), the net effect of a 1°C rise in temperature is to decrease growth rates in poor countries by −1.39 percentage points. Put another way, since the standard deviation of annual temperature once country fixed effects, region \times year, and poor country \times year fixed effects are removed is 0.50 degrees,

¹³ We have also considered quintiles of initial per capita income rather than a binary distinction. We find the largest negative effects of temperature on the bottom two quintiles of temperature, and especially on the lowest income quintile. Using an interaction with a linear initial log per capita income variable produces similar results, although the linear specification implies positive effects of temperature in rich countries, which do not appear with either the rich/poor dummy or using quintiles. (See online Appendix.)

the estimates in Table 2 imply that a one standard deviation increase in annual temperature is associated with a reduction in growth of about 0.69 percentage points.

The next column of Table 2 adds precipitation as a control variable, and shows that controlling for precipitation does not substantively affect the temperature estimates. Average annual precipitation itself shows relatively mild effects. An extra 100 mm of annual precipitation is associated with a 0.08 percentage point lower growth rate in rich countries and a statistically insignificant 0.07 percentage point higher growth rate in poor countries. In our data, global mean precipitation levels have fallen nearly 100 mm in the last 50 years, so a 100 mm variation in precipitation is on the same order historically as the 1°C rise in temperature. By this metric, the effects of mean precipitation typically appear a factor of 10 times smaller than the temperature effect in poor countries.¹⁴ Moreover, we show below that the statistical significance of the precipitation effects in rich countries is sensitive to specification, suggesting that they should be interpreted with caution.¹⁵

Poorer countries tend to be both hotter and more agricultural. In columns 4 and 5, we consider whether being “poor” proxies for these characteristics. Column 4 adds the interaction between temperature and “hot,” defined as having above median temperature in the 1950s. The negative effect of temperature appears through being poor, not through being hot, with the poor coefficient remaining unchanged.¹⁶ Column 5 controls for the interaction between temperature and “agricultural,” defined as having an above median agricultural GDP share in 1995.¹⁷ Once again, the negative effect of temperature appears through being poor.¹⁸ While it is impossible to definitively separate the impacts of poverty from those of the agriculture share or mean temperature (or the many other variables that are correlated with poverty), this evidence suggests that being poor usefully characterizes a locus of substantial negative temperature effects.

The point estimates in Table 2 tend to show that rich countries experience increased growth with a rise in temperature, but this result is not statistically significant. The *t*-statistics are below 1.0 for all specifications except the last, which controls for agricultural intensity. Looking ahead to further results in the paper and the online Appendices, which examine alternative panel specifications, data sources,

¹⁴ As an alternative metric, the standard deviation of precipitation across the entire sample (after removing fixed effects) is about 25 mm, so a one standard increase in precipitation would increase growth in poor countries by a (statistically insignificant) 0.02 percentage points, or about 1/40 the estimated effect of a one standard deviation in temperature.

¹⁵ In Section III, precipitation is shown to have a more robust, positive effect on agricultural output in poor countries. These results on average precipitation also do not capture the impact of extreme precipitation events, such as extended droughts or flooding. However, online Appendix Figure A3 suggests that the negative effects of precipitation in rich countries are driven by very large outlier events, suggesting that indeed floods may be important. Also, given the large heterogeneity in growing seasons between countries, we do not distinguish between rain in the growing, harvest, planting, or dry seasons as done, e.g., by Maccini and Yang (2009).

¹⁶ In results not reported in the table, we have also experimented with different definitions of “hot,” such as being above the seventy-fifth or ninetieth percentiles of the world average temperature distribution, as well as a linear temperature variable. The results from these alternative specifications are qualitatively similar to the results presented in the table. See the online Appendix.

¹⁷ We use 1995 data for agricultural share because data coverage from earlier years is sparse. Using earlier data cuts sample sizes considerably but produces broadly similar results.

¹⁸ As reported in the online Appendix, regressions that control only for temperature fluctuations and their interaction with the agriculture share (i.e., not including interactions with national income) produce statistically insignificant effects for agriculture, further suggesting that poverty is the more informative characteristic. Furthermore, regressions that include linear interactions with initial income, temperature, and agriculture share (as opposed to binary dummies) continue to show that initial poverty is the relevant distinction.

and samples, the econometric findings show a similar pattern—typically positive but rarely statistically significant temperature effects in rich countries.

C. Models with Lags

The above results, using the simple model with no lags, reject the null hypothesis that temperature has no effect on growth in poor countries. This section considers more flexible models with up to 10 lags of temperature to better understand the dynamics of these temperature effects, nesting both the level and growth effects of temperature described in Section IIA.

Table 3 presents results from estimating equation (4) with no lags, one lag, five lags, or ten lags of the weather variables. In columns 1–4, temperature and its lags are the only weather variables included. Columns 5–8 present results where precipitation and its lags are also included. All temperature and precipitation variables are interacted with poor and rich country dummies. The bottom two rows of each column present, separately, the cumulated effect of temperature for poor and rich countries, calculated by summing the respective temperature variable and its lags. In models with more than one lag, given space constraints, the table reports only the first three lags and the sum of all the lags.¹⁹

Table 3 shows that the cumulative effect of temperature in poor countries remains substantially negative, with fairly stable point estimates, as more lags are included. With no lags, in columns 1 and 5, a one-time 1°C temperature increase in a poor country reduces growth by 1.35–1.39 percentage points. With one lag included, the cumulative effect is a reduction of 0.98–1.10 percentage points. The results are broadly consistent in magnitude and statistical significance as we add more lags, with a 1°C temperature increase producing a 1.04–1.23 percentage point reduction in growth. The only exception is the cumulative effect with ten lags of temperature, when we also include ten lags of precipitation (column 8), which is 0.858 and no longer statistically significant.

The individual lag coefficients show little evidence of a level effect of temperature on output. That is, the effects of above average temperature appear to persist in the medium run, rather than being reversed. Recalling the empirical framework from Section IIA, level effects are reversed when the temperature shock is reversed. In the model with one lag, i.e., columns 2 and 6, a level effect would appear as equal and opposite coefficients on the immediate effect and the first lag. More generally, even if level effects occur with lags, i.e., if last year's temperature affects this year's harvest, level effects are eventually reversed once the shock disappears. Therefore, to the extent temperature effects are level effects, the cumulated sum of the temperature effect and all its lags should be zero. That the lags in Table 3 do not sum to zero suggests that the effects of temperature persist in the medium run, i.e., they look more like growth effects than level effects.

Of course, temperature effects may be mitigated beyond the ten year horizon examined here. In Section IV, we consider an alternative empirical approach that examines longer run historical relationships between changes in temperature and

¹⁹The full set of lags for Table 3, column 10, is reported in online Appendix Table A34.

TABLE 3—MODELS WITH LAGS

	No lags (1)	1 lag (2)	5 lags (3)	10 lags (4)	No lags (5)	1 lag (6)	5 lags (7)	10 lags (8)
Temperature × Poor	−1.394*** (0.408)	−1.610*** (0.525)	−1.555*** (0.572)	−1.597*** (0.565)	−1.347*** (0.408)	−1.559*** (0.522)	−1.514*** (0.577)	−1.580*** (0.579)
L1: Temperature × Poor		0.514 (0.439)	0.614 (0.489)	0.572 (0.498)		0.576 (0.433)	0.666 (0.479)	0.627 (0.481)
L2: Temperature × Poor			−0.334 (0.566)	−0.368 (0.580)			−0.338 (0.570)	−0.354 (0.586)
L3: Temperature × Poor			−0.105 (0.480)	−0.175 (0.489)			−0.064 (0.489)	−0.152 (0.506)
Temperature × Rich	0.261 (0.312)	0.206 (0.323)	0.227 (0.330)	0.219 (0.348)	0.262 (0.311)	0.215 (0.322)	0.235 (0.338)	0.234 (0.356)
L1: Temperature × Rich		0.135 (0.300)	0.143 (0.297)	0.166 (0.317)		0.137 (0.298)	0.143 (0.299)	0.168 (0.323)
L2: Temperature × Rich			0.165 (0.257)	0.158 (0.263)			0.181 (0.262)	0.172 (0.273)
L3: Temperature × Rich			−0.100 (0.271)	−0.129 (0.277)			−0.110 (0.277)	−0.137 (0.286)
Includes precipitation vars.	No	No	No	No	Yes	Yes	Yes	Yes
Observations	4,924	4,924	4,916	4,906	4,924	4,924	4,916	4,906
R ²	0.22	0.22	0.22	0.23	0.22	0.22	0.23	0.23
Within R ²	0.01	0.00	0.00	0.01	0.00	0.01	0.01	0.01
Sum of all temp. coeff. in poor countries	−1.394*** (0.408)	−1.096*** (0.418)	−1.235** (0.527)	−1.171* (0.611)	−1.347*** (0.408)	−0.983** (0.416)	−1.041** (0.530)	−0.858 (0.647)
Sum of all temp. coeff. in rich countries	0.261 (0.312)	0.341 (0.400)	−0.180 (0.566)	−0.152 (0.786)	0.262 (0.311)	0.352 (0.396)	−0.191 (0.546)	−0.189 (0.758)

Notes: All specifications use WDI data and include country FE, region × year FE, and poor × year FE. Robust standard errors are in parentheses, adjusted for two-way clustering at parent-country and year-region levels. Sample includes all countries with at least 20 years of growth observations. Columns 5–8 also include Precipitation × Poor and Precipitation × Rich, with the same number of lags as the temperature variables shown in the table. Columns 3 and 7 also include the fourth and fifth lags of Temperature × Poor, Temperature × Rich, Precipitation × Poor and Precipitation × Rich. Similarly columns 4 and 8 also include the fourth through tenth lags of Temperature × Poor, Temperature × Rich, Precipitation × Poor and Precipitation × Rich; those coefficients are suppressed in the table to save space. Sum of all temperature coefficients in poor countries shows the sum (and calculated standard error) of Temperature × Poor and all of the lags of Temperature × Poor included in the regression; sum of all temperature coefficients in rich countries is calculated analogously.

***Significant at the 1 percent level.

**Significant at the 5 percent level.

*Significant at the 10 percent level.

changes in growth. That analysis finds longer run effects that are broadly consistent with these panel results but less statistically significant than the findings in Table 3.

D. Robustness

This section considers a variety of robustness checks, summarized in Table 4. Numerous additional analyses are presented in the online Appendix. We consider robustness to alternative panel specifications, samples and data sources, and further examine nonlinear temperature effects.

Panel Specifications.—We find that the results are broadly consistent across a range of alternative panel specifications, particularly the results with no lags. Table 4, panel A reports the results from models with no lags, while panels B and C report cumulative effects from models with five and ten lags, respectively.²⁰ To facilitate comparisons, the relevant results from Tables 2 and 3 are repeated in the first column of Table 4. The results in column 2, which incorporate country-specific trends as well as region \times year and poor \times year fixed effects, appear to be somewhat larger in magnitude than the baseline results, suggesting that the results are not being driven by secular time trends within countries.²¹ As discussed in online Appendix II and presented in online Appendix Table A1, the results are robust to more general dynamic panel regression models that use various lag structures. As an additional specification check, online Appendix Tables A37–38 report regressions that include one to ten leads of temperature. In no case are the leads significant, even when the contemporaneous temperature term is omitted. When controlling for leads, the contemporaneous and cumulated lag temperature effects remain of similar magnitude to those in the main results.

Finally, we have also investigated alternative formulations of the temperature and precipitation variables. First, we have considered using logs rather than levels of annual average temperature and precipitation. This specification strengthens the results. Second, we have constructed weather anomalies, normalizing annual temperature and precipitation by subtracting each country's mean and dividing by each country's standard deviation. This specification produces similarly sized impacts although standard errors typically increase, suggesting a model based on absolute temperature differences may be more appropriate. These results are all available in the online Appendix.

Sample and Data Sources.—Since countries' growth data starts at different dates, Table 4 (column 3) repeats the main specification on a balanced sample where all countries are present in the sample for the entire period.²² The point estimates are almost identical to the baseline results, although the standard errors in the five and ten lag specifications increase, as one might expect given that we have reduced the amount of data in the model. Expanding the data to include countries with less than 20 years of data also continues to show substantial negative effects in poor countries (column 4), with little change from the baseline specification.

Table 4 column 5 reconsiders the main specification using growth data from the Penn World Tables rather than the WDI. The results are very similar, though the 10 lag result is now statistically significant. Column 6 uses temperature and precipitation data aggregated using area-weighting rather than population-weighting and shows similar effects, though the zero-lag effect for rich countries is now statistically

²⁰The results in panel A correspond to column 3 of Table 2. Panels B and C correspond to columns 7 and 8 of Table 3. Results from models with one and three lags are qualitatively similar and are omitted to conserve space.

²¹Including country and region \times year fixed effects only (i.e., dropping the poor \times year fixed effects) produces similar estimated temperature effects in poor countries to the baseline results, though the results with five and ten lags attenuate somewhat. Similar results also emerge when we use common global year fixed effects instead of region \times year fixed effects and also drop the poor \times year fixed effects. We have also estimated a first differenced version of (4). This produces very similar results for the 0 lag model, while the estimates become substantially more negative and more imprecise as we add additional lags. These results are available in the online Appendix.

²²Note that temperature and precipitation data is present over the entire period, so having different start dates for the growth data is not an issue for calculating the lags in the model, since we can always calculate the lags of the weather data even if the growth data is missing.

TABLE 4—ALTERNATIVE SPECIFICATIONS OF PANEL RESULTS

	Baseline (1)	All FE and country specific trends (2)	Balanced sample: 1971–2003 (3)	Add countries with < 20 years of data (4)	GDP data from PWT (5)	Area- weighted climate data (6)	Sub- Saharan Africa only (7)	Sub- Saharan Africa excluded (8)
<i>Panel A. Models with no lags</i>								
Temp. immediate effect—poor	−1.347*** (0.408)	−1.723*** (0.603)	−1.377*** (0.484)	−1.158*** (0.424)	−0.860*** (0.299)	−0.891** (0.347)	−1.881*** (0.631)	−0.904* (0.531)
Temp. immediate effect—rich	0.262 (0.311)	0.417 (0.473)	0.387 (0.323)	0.595 (0.381)	0.343 (0.228)	0.480** (0.220)		0.295 (0.323)
Precip. immediate effect—poor	0.070 (0.058)	0.026 (0.137)	0.040 (0.084)	0.029 (0.051)	0.050 (0.069)	0.074 (0.063)	0.131 (0.111)	0.032 (0.071)
Precip. immediate effect—rich	−0.083* (0.050)	−0.066 (0.089)	−0.101* (0.058)	−0.022 (0.061)	−0.074 (0.060)	−0.087 (0.056)		−0.087* (0.053)
Observations	4,924	4,924	2,592	5,396	5,494	4,924	1,366	3,430
<i>Panel B. Models with 5 lags</i>								
Temp. cumulative effect—poor	−1.041** (0.530)	−2.025** (0.907)	−0.931 (0.943)	−1.067** (0.494)	−0.738*** (0.269)	−0.874* (0.522)	−0.705 (0.840)	−1.318* (0.684)
Temp. cumulative effect—rich	−0.191 (0.546)	0.245 (0.961)	0.276 (0.654)	−0.073 (0.582)	−0.022 (0.517)	−0.053 (0.504)		−0.377 (0.562)
Precip. cumulative effect—poor	0.238 (0.194)	0.211 (0.290)	0.221 (0.215)	0.084 (0.139)	0.193 (0.169)	0.241 (0.191)	0.868 (0.611)	−0.003 (0.141)
Precip. cumulative effect—rich	−0.127 (0.088)	−0.084 (0.208)	−0.161 (0.196)	−0.039 (0.142)	−0.134 (0.094)	−0.129 (0.089)		−0.121 (0.089)
Observations	4,916	4,916	2,592	5,285	5,272	4,916	1,366	3,422
<i>Panel C. Models with 10 lags</i>								
Temp. cumulative effect—poor	−0.858 (0.647)	−1.964 (1.211)	−0.951 (1.242)	−0.791 (0.641)	−0.768** (0.337)	−0.683 (0.635)	−0.803 (0.994)	−0.969 (0.843)
Temp. cumulative effect—rich	−0.189 (0.758)	0.582 (1.414)	0.198 (0.913)	−0.059 (0.827)	−0.443 (0.822)	−0.064 (0.738)		−0.469 (0.783)
Precip. cumulative effect—poor	0.429* (0.227)	0.573 (0.413)	0.455* (0.244)	0.236 (0.180)	0.254 (0.182)	0.435** (0.221)	0.922 (0.770)	0.234 (0.153)
Precip. cumulative effect—rich	−0.195 (0.137)	−0.142 (0.370)	−0.141 (0.394)	−0.183 (0.178)	−0.070 (0.134)	−0.196 (0.138)		−0.180 (0.143)
Observations	4,906	4,906	2,590	5,146	4,946	4,906	1,366	3,412

Notes: All specifications use WDI data and include country FE, region × year FE, and poor × year FE unless otherwise noted. Robust standard errors adjusted for two-way clustering at the parent-country and year-region levels are in parentheses. Except where noted, panel A follows the same specification as column 5 of Table 2, panel B follows the same specification as column 7 of Table 3, and panel C follows the same specification as column 8 of Table 3. In column 7, the sub-Saharan Africa sample incorporates three rich countries—South Africa, Gabon, and Mauritius.

***Significant at the 1 percent level.

**Significant at the 5 percent level.

*Significant at the 10 percent level.

significant.²³ Splitting the sample into sub-Saharan African countries (column 7) and all other countries (column 8), the model with zero lags shows that the negative

²³ Weighting by rural population or urban population yields similar results to using total population weights; see the online Appendix.

impacts of temperature are especially pronounced in sub-Saharan Africa, but are still negative and statistically significant elsewhere, and the difference between the sub-Saharan Africa and non-sub-Saharan Africa samples is not statistically significant.²⁴ When we examine either the five or ten lag models, the negative point estimates are comparable in magnitude in both samples.²⁵

National accounts are notoriously hard to measure, particularly in developing countries (Deaton and Heston 2010; Ciccone and Jarocinski 2010; Young 2009). To investigate the extent to which measurement problems in the data are driving the results, we have examined the impact of temperature on exports. Since exports from poor countries are reported by the importing countries, these data are much more accurately measured than national accounts data. As reported in Jones and Olken (2010), analyzing export growth data as recorded by the US and other importing countries shows similarly large negative effects of increased temperature on poor countries' exports, but not on rich countries' exports. This finding indicates that the core panel finding is not driven by potentially low-quality national accounts data in poor countries.

Finally, we have investigated concerns that the temperature and precipitation data quality may be lower for poor countries, and concerns in particular that weather stations may enter or exit our sample in response to economic conditions. First, we have repeated our analysis of Africa with a number of alternative weather datasets.²⁶ Results are broadly similar in all samples, although limited size for alternative datasets reduces the estimates' precision. Second, the Global Historical Climatology Network (GHCN) dataset (the main underlying source for the Matsuura and Willmott (2007) data we use here) indicates whether a weather station is missing an observation in a given year. Using panel regression models, we find no relationship between economic conditions or political instability and the number of weather stations that are missing data in a given country and year.²⁷

Nonlinear Temperature Effects.—In our analysis, temperature enters linearly, whereas one might suspect that temperature has nonlinear effects.²⁸ To further investigate this possibility, beyond the interaction terms examined in Table 2, we examined more flexible aggregations of the subnational temperature data. Using daily temperature and precipitation data available on a 1.0×1.0 degree grid (NCC

²⁴ Given the very small number (3) of rich countries in sub-Saharan Africa, we group these together into a unified sub-Saharan African sample.

²⁵ Our results do differ from Barrios, Bertinelli, and Strobl (2010), who in their investigation of rainfall in sub-Saharan Africa include temperature as a control in one specification, finding no effects. Our specification differs from theirs on many dimensions. Barrios, Bertinelli, and Strobl (2010) examine fewer countries and fewer years of data, use a different temperature variable, and use a somewhat different empirical specification.

²⁶ These alternative datasets are the Global Precipitation Climatology Project, the National Center for Environment Prediction, and the UN Food and Agricultural Organization Climatic Data, which provide alternative precipitation series. See online Appendix for analysis and further discussion.

²⁷ In particular, we run panel regressions relating the share of stations that are missing in a given country and year (the dependent variable) to economic growth and political instability measures (interacted with poor country dummies). These regressions show no effect of these economic and political variables on station reporting in poor countries. See the online Appendix.

²⁸ For example, Deschenes and Greenstone (2007) find nonlinear temperature effects for agriculture and mortality, and Schlenker, Hanemann, and Fisher (2006), Schlenker and Roberts (2006), and Schlenker and Roberts (2009) find important nonlinear temperature effects for agriculture.

2005), we calculated the number of “people-days” spent at each temperature and precipitation level throughout the year for each country. We then repeated the panel analysis above (e.g., equation (4) with no lags) allowing the temperature and precipitation effects to vary arbitrarily at different temperature and precipitation ranges. Unfortunately, we did not have sufficient power to tease out detailed effects of the distribution of days within different temperature ranges, given that our dependent variable is measured at the annual, country level. While the results are imprecise, the point estimates suggest that the impact of temperature on GDP is roughly linear, supporting the focus on annual averages (see the online Appendix).

We have also conducted additional analysis of nonlinear effects of the average temperature variable, finding little evidence for such nonlinearities. First, we verified that both hot and cold deviations from the national temperature mean have effects of similar absolute magnitude on growth. Second, we found that temperature shocks do not affect poor countries differentially depending on whether the country is typically hot or cold, though the tiny number of cold poor countries prevents a definitive conclusion.²⁹ Although our power to assess nonlinearities is limited given the few degrees of variation in temperature within each country, the evidence here does not show substantial nonlinearities.

III. Channels

The large and persistent effects of temperature shocks on aggregate output in poor countries suggest further investigation of the temperature-economy relationship. Many macroeconomic models of climatic effects emphasize a limited set of channels, especially agriculture, and income level effects, rather than effects on factor accumulation or other dimensions that could impact growth. The microeconomic literature, by contrast, considers broader dimensions of climatic effects, including physical and cognitive labor productivity, conflict, and health, all of which could have economy-wide implications.³⁰ At the same time, the micro evidence often comes from local environments, usually in rich countries, which may or may not extend to national settings or to poor countries. In this section, we apply our panel methodology to explore whether the effects of temperature are primarily limited to agriculture, or whether temperature affects other important dimensions. Such analysis tests the narrow focus of mainstream aggregate climate-economy models and may also help inform our finding of possible growth effects in the distributed lag structure.

Note that these analyses are reduced-form, and therefore do not identify the possibly complex structural relationships between temperature, growth, and other outcomes. For example, higher temperature could lead directly to political instability by making a population more prone to riot (US Riot Commission 1968; Carlsmith and Anderson 1979). Conversely higher temperatures could lower agriculture yields, with the resulting GDP reduction provoking political instability. Teasing out structural relationships between these many variables would require a number of ad hoc identifying assumptions and lies far beyond the scope of this

²⁹ These results are presented in online Appendix Table A39.

³⁰ Footnote 1 provides a brief summary of this very large literature.

single study. We focus instead on net effects, which we can identify clearly, to shed light on the breadth and type of potential channels through which temperature may affect aggregate output. The results, which show impacts not only on agriculture, but also on industrial output and political stability, emphasize temperature's broad influences.

A. Agriculture, Industry, and Investment

Table 5 examines the impact of temperature and precipitation on several components of GDP. Panel A begins with zero-lag models to test the null hypotheses of no effects of temperature. Columns 1–3 examine growth in agricultural value-added, industrial value-added, and aggregate investment, respectively.³¹ These variables are taken from the World Development Indicators.

The results in panel A show substantial, negative effects of temperature in poor countries on agricultural and industrial value-added. Column 1 shows that a 1°C higher temperature in poor countries is associated with 2.66 percentage points lower growth in agricultural output. For wealthier countries, the point estimate is substantially smaller and not statistically significant, showing 0.22 percentage points lower growth in agricultural output for each additional 1°C of temperature. As might be expected, precipitation positively impacts agriculture—each additional 100 mm of annual rainfall is associated with 0.18 percentage points higher growth in agricultural output in poor countries and 0.16 percentage points higher growth in agricultural output in richer countries, though these effects are not statistically significant.³²

Column 2 of panel A shows negative temperature impacts on the growth of industrial value-added in poor countries. Specifically, a 1°C higher temperature in poor countries is associated with 2.04 percentage points lower growth in industrial output. In related work, Jones and Olken (2010) examine export growth in 2-digit trade data, and also find negative effects of temperature on both agricultural products and industrial products in poor countries. Many of the industrial sectors affected by temperature in the exports data, such as electronic equipment and light metal manufactures, are not downstream processors of agricultural products. Hsiang (2010) also documents similar impacts on industrial output in his study of temperature shocks in 28 Caribbean countries. The results on investment in column 3 also suggest negative impacts of temperature in poor countries, though the results are not statistically significant.³³

³¹ We find negative effects of similar magnitude on the residual category services, which is typically computed as the difference between total value-added and the sum of agricultural and industrial value added (see online Appendix).

³² Note that we are estimating only the average impact of temperature and precipitation without accounting for whether it was in the season that would be most beneficial or harmful to agricultural production. This likely creates an errors-in-variables problem, which may suggest that we are understating the true effect of temperature and precipitation on agriculture (see, e.g., Schlenker and Roberts 2009).

³³ Note, however, that there is a weakly significant precipitation effect in rich countries. Using daily data on precipitation (NCC 2005), we find that having a larger number of days with very high precipitation has a significant negative effect on aggregate output in rich countries (see online Appendix). One conjecture is that construction responds negatively to rain, providing the investment effect. Note also that aggregate investment in poor countries does show a statistically significant decline of 3.0 percentage points when using the full Penn World Tables sample, which is 50 percent larger.

TABLE 5—COMPONENTS OF OUTPUT GROWTH

Panel A. Models with no lags

	Dependent variable is		
	Growth in agriculture value added	Growth in industrial value added	Growth in investment
	(1)	(2)	(3)
Temperature	No lags	No lags	No lags
Immediate effect—poor	−2.666*** (0.948)	−2.036** (0.878)	−0.895 (1.269)
Immediate effect—rich	−0.222 (0.650)	0.514 (0.452)	0.182 (0.870)
Precipitation			
Immediate effect—poor	0.182 (0.135)	0.238 (0.146)	−0.019 (0.223)
Immediate effect—rich	0.16 (0.119)	−0.007 (0.100)	−0.419* (0.217)
Observations	3,835	3,835	4,419

Panel B. Models with lags

	Dependent variable is								
	Growth in agriculture value added			Growth in industrial value added			Growth in investment		
	(1)	(2)	(3)	(4)	(5)	(6)	(7)	(8)	(9)
Temperature	1 lag	5 lags	10 lags	1 lag	5 lags	10 lags	1 lag	5 lags	10 lags
Cumulative effect—poor	−1.26 (0.882)	−1.051 (1.007)	−1.337 (1.203)	−1.835 (1.123)	−0.958 (1.365)	−2.242 (1.796)	1.170 (1.287)	0.128 (1.665)	−0.219 (1.797)
Cumulative effect—rich	0.328 (0.678)	0.002 (0.754)	0.236 (1.203)	0.653 (0.572)	0.111 (0.734)	0.321 (1.096)	0.598 (0.894)	−1.38 (1.333)	−1.283 (1.356)
Immediate effect—poor	−3.684*** (1.389)	−3.703*** (1.385)	−3.797*** (1.416)	−2.091** (0.987)	−2.334** (1.112)	−2.578** (1.172)	−2.235 (1.946)	−1.851 (1.972)	−2.229 (2.025)
Immediate effect—rich	−0.543 (0.792)	−0.468 (0.793)	−0.566 (0.815)	0.457 (0.486)	0.433 (0.498)	0.404 (0.500)	−0.079 (1.185)	0.19 (1.199)	0.282 (1.172)
Precipitation									
Cumulative effect—poor	0.094 (0.120)	0.129 (0.159)	0.052 (0.185)	0.328** (0.158)	0.205 (0.237)	0.230 (0.322)	0.148 (0.268)	0.007 (0.289)	−0.283 (0.349)
Cumulative effect—rich	0.207* (0.120)	0.394*** (0.143)	0.476** (0.233)	−0.071 (0.135)	−0.083 (0.229)	−0.113 (0.303)	−0.317 (0.203)	−0.017 (0.336)	−0.519 (0.364)
Immediate effect—poor	0.220 (0.180)	0.235 (0.197)	0.252 (0.208)	0.188 (0.187)	0.108 (0.168)	0.078 (0.166)	−0.106 (0.361)	−0.174 (0.402)	−0.190 (0.405)
Immediate effect—rich	0.154 (0.172)	0.153 (0.184)	0.169 (0.192)	0.012 (0.124)	0.001 (0.132)	0.002 (0.137)	−0.434* (0.262)	−0.468* (0.282)	−0.457 (0.283)
Observations	3,835	3,827	3,817	3,835	3,827	3,817	4,419	4,411	4,401

Notes: Growth in agriculture value-added and industrial value-added are from the WDI; growth in investment is also from the WDI. All specifications include country FE, region \times year FE, and poor \times year FE. Robust standard errors are in parentheses, adjusted for two-way clustering at parent-country and year-region levels. Sample includes all countries with at least 20 years of PWT growth observations (i.e., the same set of countries considered in the previous tables).

***Significant at the 1 percent level.

**Significant at the 5 percent level.

*Significant at the 10 percent level.

Panel B examines the lag structure of these effects. For each dependent variable (growth in agriculture, growth in industry, and growth in investment), we present results with 1, 5, and 10 lags. For all three dependent variables, the impact effect (i.e., the coefficient on contemporaneous temperature) is negative and large, though the investment variable is not statistically significant. For agriculture, the point estimates of the cumulative effects, while imprecise, are somewhat smaller than the immediate effects, suggesting the presence of some combination of growth and level effects for these variables. For industrial value added, the point estimates of the cumulative effects are closer in magnitude to the immediate effect.

These findings on industrial value added reject a narrow view of climatic effects. While confirming agricultural effects, the results further show large shocks to industrial output growth in poor countries. There are several possible, nonmutually exclusive explanations for temperature's impact on industrial output. First, this effect could partly represent a demand-side spillover from the negative effect of temperature on agricultural output. Second, this effect may reflect labor productivity losses, consistent with a large literature documenting the impact of temperature on output in factory and other settings. For example, Graff Zivin and Niedell (2010) demonstrate substantial contractions in labor supply on hot days in those US industries with high exposure to weather (e.g., those with work outdoors and those without access to air conditioning).³⁴ Their estimated magnitudes are large. For high temperature exposure occupations, temperatures over 100° Fahrenheit (37.7°C) lead to 23 percent lower labor supply than temperatures between 76–80° Fahrenheit (24.4–26.6°C). If poor countries' industrial sectors are more sensitive to temperature than those of rich countries (for example, because they are not air conditioned), then these types of labor supply or other labor productivity effects could explain the substantial impact of temperature on manufacturing that we observe.

B. Political Economy

Temperature may also impact growth if increased temperature leads to political instability, which in turn may impede factor accumulation and productivity growth. Empirically, political instability is associated with lower economic growth (Alesina 1996), and there is substantial empirical evidence that riots and protests are more likely in warmer weather (e.g., US Riot Commission 1968; Carlsmith and Anderson

³⁴Building on classic ideas in economic development that link productivity to temperature (Montesquieu 1750, Marshall 1920), Huntington (1915) documented that high temperature reduces the productivity of piece-rate Connecticut factory workers and Florida cigar makers. More recently, Link and Pepler (1970), Wyon (1976), Meese et al. (1982), and others have found substantial negative impacts of higher temperatures on the productivity of factory workers. More generally, the large literature on climate and productivity, which includes laboratory experiments and experiments in actual work places (i.e., factories, call centers, and office buildings), robustly finds a decrement in work performance when temperatures exceed those associated with thermal neutrality. The review of Seppänen, Fisk, and Faulkner (2003) finds a median 2 percent decrement in work performance per degree Celsius temperature rise above 25°C. Moreover, in a meta-analysis of more than 150 studies, Ramsey and Kwon (1992) distinguish between simple mental tasks (i.e., simple perpetual motor, reaction time) and more complex tasks (i.e., tracking, vigilance, dual tasks). While effects of heat stress appear limited or simple mental tasks, statistically significant effects appear at high temperatures for the second class of tasks. Simpler tasks may be less affected because when the body becomes impaired by or expends energy to counteract the negative impacts of heat stress (i.e., dehydration, increased sweating and loss of sodium, etc.), the automatic processes in simple tasks are prioritized over complex cognitive tasks that are typically less essential for survival.

1979; Boyanowsky 1999).³⁵ Alternatively, economic impacts of higher temperatures might provoke dissatisfied citizens to seek institutional change (Burke and Leigh 2010; Brückner and Ciccone 2011).

We examine the impact of temperature on several measures of political instability. First, the *Polity IV* dataset (Marshall and Jaggers 2004) rates the political system in each country annually from -10 (fully autocratic) to $+10$ (fully democratic). This POLITY variable further designates “interregnum periods,” which are years when the political system is in flux and no clear political regime has emerged.

The second set of measures comes from the *Archigos* dataset on political leaders (Goemans, Gleditsch, and Chiozza 2006). This dataset classifies the primary national political leader for each country and year and codes all leader transitions into two categories: “regular” transitions, which take place according to the prevailing institutional rules of the country; and “irregular” transitions (such as coups), which do not follow the prevailing institutional rules. We consider a dummy variable for years with leadership transitions, as well as separate dummy variables for regular and irregular transitions.

The results are presented in Table 6. Looking first at POLITY, an additional 1°C in poor countries is associated with a 2.7 percentage point increase in the probability of any change in POLITY.^{36, 37} The *Archigos* results show a similar pattern and are stronger statistically. A 1° rise of temperature raises the probability of leader transitions by 3.1 percentage points in poor countries (column 2). Moreover, this effect comes not from regular leadership transitions (column 3) but from irregular leader transitions, i.e., coups (column 4). This effect of 4.4 percentage points is large, as the baseline probability of an irregular leader transition is only 4.5 percent per year in poor countries. By contrast, we see no effects on leader transitions in rich countries.

Combined, the POLITY and *Archigos* data tell a similar story. Higher temperatures are associated with political instability in poor countries. Whether temperature has direct effects on political instability, which in turn affects economic growth, or whether temperature has direct effects on economic growth, which in turn affects political instability, or both, is difficult to distinguish, since poor economic performance and political instability are likely mutually reinforcing. Nevertheless, the impact of temperature on political instability in poor countries is suggestive of an institutional mechanism through which temperature might affect productivity growth, rather than just the level of income.³⁸

³⁵ Medical studies have documented that levels of platelet paroxitine, a chemical that blocks impulsivity and aggression, fall when temperatures increase and have linked low levels of platelet paroxitine to higher rates of aggression (Tihonen et al. 1997). Violent crime also increases with temperature (Jacob, Lefgren, and Moretti 2007).

³⁶ In the online Appendix, we decompose this change into contemporaneous increases in POLITY (toward democracy), decreases (toward autocracy), or shifts into interregnum periods (between regimes). We find about half of the changes induced by temperature are decreases in POLITY and about half are interregnum periods, though the decomposition is weak statistically. See online Appendix Table A36.

³⁷ The results on precipitation appear smaller, but suggest that political change in poor countries is more likely in years with lower rainfall.

³⁸ These results, emphasizing political instability, complement but differ from recent literature finding that weather-associated output contractions predict democratization (Burke and Leigh 2010; Brückner and Ciccone 2011). Here we look at a more general class of political changes and make no claim that the effects of temperature shocks are felt on political variables through an output channel.

TABLE 6—POLITICAL ECONOMY EFFECTS

	Any change in POLITY score (1)	Leader transition (2)	Regular leader transition (3)	Irregular leader transition (4)	Start of conflicts (conditional on conflict = 0 in $t - 1$) (5)	End of conflicts (conditional on conflict > 0 in $t - 1$) (6)
Temperature	−0.013 (0.009)	−0.002 (0.015)	0.004 (0.015)	−0.005 (0.004)	−0.006 (0.006)	0.005 (0.060)
Temperature × Poor	0.040** (0.016)	0.033 (0.023)	−0.017 (0.017)	0.050*** (0.013)	0.012 (0.013)	0.003 (0.068)
Precipitation	0.001 (0.003)	0.003 (0.002)	0.003 (0.003)	0.000 (0.001)	0.000 (0.001)	0.023 (0.019)
Precipitation × Poor	0.008 (0.005)	−0.008* (0.004)	−0.008** (0.004)	0.000 (0.002)	0.000 (0.002)	−0.031 (0.020)
Observations	5,388	6,624	6,624	6,624	5,702	852
R^2	0.14	0.18	0.2	0.11	0.09	0.43
Within R^2	0.003	0.001	0.001	0.004	0.000	0.004
Temperature effect in poor countries	0.027* (0.015)	0.031* (0.017)	−0.013 (0.010)	0.044*** (0.013)	0.007 (0.011)	0.008 (0.037)
Precipitation effect in poor countries	−0.009** (0.004)	−0.005 (0.004)	−0.005* (0.003)	0.000 (0.002)	0.000 (0.002)	−0.009 (0.007)

Notes: Column 1 uses data from the POLITY IV dataset; columns 2–4 use data from the Archigos dataset; and columns 5–6 use data from the PRIO dataset. Columns 1–4 include country FE, region × year FE, and poor × year FE; columns 5–6 include country FE and year FE. Robust standard errors are in parentheses, adjusted for two-way clustering at parent-country and year-region levels. Sample includes all countries with at least 20 years of WDI growth observations (i.e., the same set of countries considered in the previous tables).

***Significant at the 1 percent level.

**Significant at the 5 percent level.

*Significant at the 10 percent level.

The final columns of Table 6 consider the impact of temperature on conflict. We use the PRIO conflict data (PRIO 2006), which indicates for every country-year whether the country was involved in a high-intensity conflict (defined as $\geq 1,000$ conflict deaths/year) or a low-intensity conflict (defined as 25 to 1,000 conflict deaths/year). Column 5 examines the start of conflicts (i.e., the probability a conflict begins given no conflict in the previous period), and column 6 examines the end of conflicts (i.e., the probability a conflict ends given conflict in the previous period).³⁹ We find no significant effect of temperature on either the start or conclusion of conflicts.⁴⁰ The political impacts of temperature thus appear more concentrated in political instability rather than civil or interstate wars.

³⁹Given how rare conflicts are, we use year fixed effects rather than region-by-year fixed effects in these specifications.

⁴⁰These results differ from Miguel, Satyanath, and Sergenti (2004), who find—also using the PRIO dataset—that greater precipitation is associated with a lower probability of conflict. We have replicated the Miguel, Satyanath, and Sergenti (2004) results in our data, and find that the differences between the findings in Table 6 and those in Miguel, Satyanath, and Sergenti (2004) come from a different sample of countries (Miguel, Satyanath, and Sergenti (2004) examine only sub-Saharan African countries from 1981–1999) and the fact that Miguel, Satyanath, and Sergenti (2004) use a somewhat different empirical specification from the one in Table 6. These replication results are presented in the online Appendix.

IV. Medium-Run Estimates

In this section, we reexamine the historical data to investigate temperature shifts over the medium run. The above, short-run panel estimates indicate substantial effects of temperature shocks in poor countries, with per capita income growth falling approximately 1 percentage point for a 1°C rise in temperature. In the medium run, the effect of sustained temperature increases might attenuate over time if economies adapt. On the other hand, sustained higher temperatures may reinforce growth-related problems by placing continued pressure on political systems or other relevant factors.

We therefore consider the longer run analogue of our panel specification, examining the relationship between temperature changes and growth changes in the early and late periods in our dataset. There is substantial heterogeneity in temperature increases over this period, with countries such as Tunisia, Zambia, and Botswana warming by approximately 1°C since the mid 1980s, while others such as Laos, Kenya, and Nigeria experienced almost no warming over the same period. We exploit this variation to ask whether countries with sustained warming saw sustained changes in growth.

Specifically, we estimate the following regression

$$\bar{g}_{i2} - \bar{g}_{i1} = \alpha + \theta_r + \gamma(\bar{T}_{i2} - \bar{T}_{i1}) + \varepsilon_i,$$

where \bar{g}_{i1} is the mean growth rate in country i in the early period (1970–1985 in our main specification), and \bar{g}_{i2} is the mean growth rate in the late period (1986–2000).⁴¹ Mean temperature and precipitation in these periods are \bar{T}_{i1} and \bar{T}_{i2} , while θ_r captures region fixed effects and a dummy for being poor, and ε_i is an independently distributed error term. This first-differenced regression is the longer run version of the fixed effects panel model in equation (4). To see this, start with equation (4) with no lags, take averages of the left- and right-hand sides for a given period, and then first-difference. We have one observation per country, having differenced out any initial conditions or other fixed national characteristics that might influence growth.⁴²

A graphical version of the results is shown in Figure 2, and the regression results are shown in Table 7. Figure 2 plots the change in growth between the 1970–1985 and 1985–2000 against the change in average temperature during the same periods, separately for poor and rich countries, along with a simple regression line (and associated standard errors). The graphs show a statistically significant downward sloping relationship in poor countries, with no statistically significant relationship in rich countries.⁴³

Turning to Table 7, the baseline specification compares the 1970–1985 period to the 1986–2000 period and shows substantial, statistically significant negative effects of warming on poor countries. In column 1, a temperature rise of 1°C reduces

⁴¹ We begin in the 1970s, rather than an earlier decade, such as the 1960s, because we lose most of the poor countries in our sample when we extend the sample back to the 1960s. We present results for a variety of alternative time periods below.

⁴² Note also that, in cross section, average growth is substantially lower in warmer countries over this period. While interesting, this is less well identified than the first-differenced results, which net out unobserved fixed country characteristics.

⁴³ The point estimates for rich countries suggest an upward slope, although it is not statistically significant, and flattens further when using median regression (see Table 7).

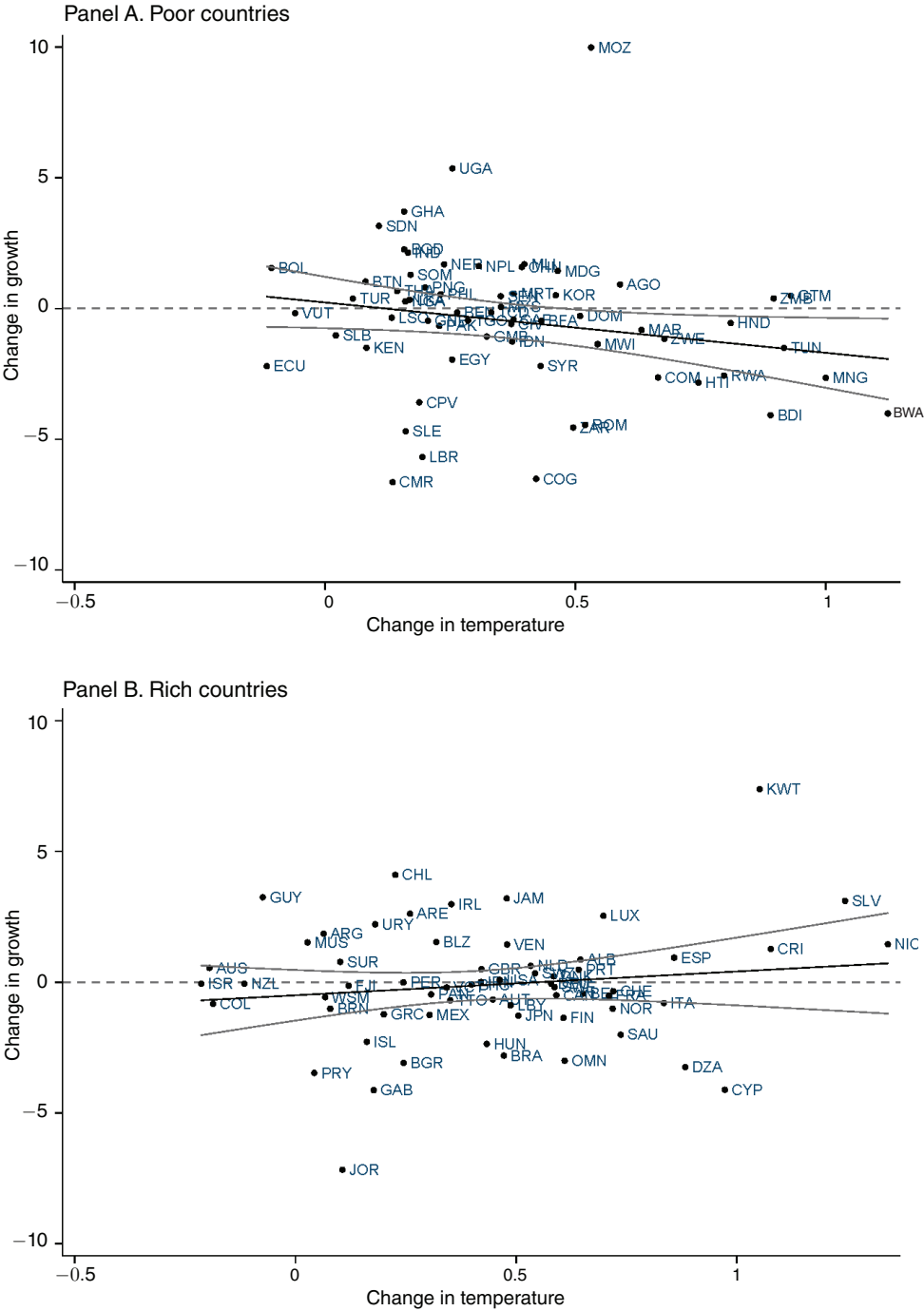


FIGURE 2. CHANGES IN GROWTH AND TEMPERATURE IN THE MEDIUM RUN

Notes: Panels A and B plot the change in average annual growth against the change in average annual temperature between the periods 1970–1985 and 1986–2000, for rich and poor countries, respectively. The solid line shows a simple linear regression, and the lighter color line shows the 95 percent confidence interval in the regression line.

annual growth in poor countries by 1.9 percentage points. The inclusion of region fixed effects does not substantially change this effect, as shown in column 2, though the result is no longer statistically significant. When we use median regressions to reduce the impact of outliers (columns 3 and 4), the estimated impact for poor countries becomes slightly larger and substantially more statistically significant. We have also examined robustness to using alternative comparison years. In all cases the temperature effect on poor countries is, as in column 2, negative but not statistically significant (see online Appendix Table A40). When we split the sample into sub-Saharan African countries (column 5) and all other countries (column 6), we find similar effects in both samples, though the estimates are not statistically significant.⁴⁴ Finally, using PWT data instead of WDI data we estimate that a 1°C increase in temperature reduces annual growth in poor countries by 2.3 percentage points (column 7). Overall, this analysis provides some suggestive evidence that the effects seen in the annual data persist over the medium run. Put another way, we find little evidence that poor countries eliminate all negative consequences of warming over the time horizons considered here.

V. Discussion

A. Temperature and Economic Development

The negative cross-sectional association between temperature and per capita income (see Figure 1) has long been known (e.g., Huntington 1915). Yet there has been a vigorous debate over whether this correlation is due to a direct impact of temperature on economic activity (e.g., Sachs 2003), or whether some third variable (e.g., a country's institutions) drives prosperity in contemporary times, leaving little or no room for geography (e.g., Acemoglu, Johnson, and Robinson 2002; Rodrik, Subramanian, and Trebbi 2004). This debate has primarily proceeded by treating temperature variables as fixed for a given country, which makes testing these alternative hypotheses challenging.

By using temperature variation within countries, we can better identify its effects. Our results show that temperature per se has an important impact on national economic performance. While not ruling out many other forces that may play important roles in economic development, the evidence here rejects the hypothesis that temperature does not influence national production. Moreover, the estimated impacts are large in magnitude, in fact, more than large enough to explain the cross-sectional temperature-income relationship between rich and poor countries. To see this, recall that the cross-sectional relationship shows a decline in per capita income of 8.5 log points, or about 8 percent, for a 1°C increase in temperature (see Figure 1). Our panel estimates show that a 1°C temperature increase reduces poor country growth rates by 1.3 percentage points. In a world with no adaptation, our panel estimates imply that cross-country temperature differences would need to be sustained for

⁴⁴ As in Table 4 above, because nearly all countries in sub-Saharan Africa are poor, we do not separately distinguish between rich and poor countries when focusing on this region.

TABLE 7—CHANGES IN GROWTH AND TEMPERATURE IN THE MEDIUM RUN

	Dependent variable: change in mean growth rate						
	Baseline sample				Africa only	Excluding Africa	PWT data
	OLS (1)	(2)	Median regression (3) (4)		(5)	(6)	(7)
Change in temperature	0.952 (1.021)	1.325 (0.980)	0.004 (0.584)	0.440 (0.747)	−1.654 (2.250)	1.318 (1.004)	1.576 (1.135)
Change in temp. × poor country	−2.886** (1.420)	−3.010** (1.456)	−2.261** (0.932)	−2.540** (1.177)		−2.980** (1.435)	−3.917** (1.532)
Change in precipitation	−0.070 (0.097)	−0.047 (0.123)	0.028 (0.113)	0.038 (0.111)	0.034 (0.565)	−0.020 (0.121)	0.025 (0.111)
Change in precip. × poor country	0.060 (0.191)	0.050 (0.214)	0.120 (0.182)	0.315 (0.208)		0.009 (0.212)	0.010 (0.238)
Region FE	No	Yes	No	Yes	No	Yes	Yes
Poor country dummy	Yes	Yes	Yes	Yes	No	Yes	Yes
Early period	1970–1985	1970–1985	1970–1985	1970–1985	1970–1985	1970–1985	1970–1985
Late period	1986–2000	1986–2000	1986–2000	1986–2000	1986–2000	1986–2000	1986–2000
Observations	125	125	125	125	35	87	120
R ²	0.04	0.11			0.06	0.19	0.12
Within R ²	0.03	0.04			0.04	0.04	0.06
Temp. effect on poor countries	−1.934* (0.986)	−1.684 (1.088)	−2.257*** (0.726)	−2.100** (0.919)	−1.654 (2.250)	−1.661 (1.047)	−2.341** (1.029)
Precip. effect on poor countries	−0.010 (0.164)	0.003 (0.167)	0.148 (0.143)	0.354** (0.175)	0.034 (0.565)	−0.012 (0.153)	0.035 (0.211)

Notes: All specifications have one observation per country. Change in temperature and precipitation are computed for each country as the difference between the mean value in the late period and the mean value in the early period (these periods are indicated in the table for each specification). The dependent variable is the change in mean growth rate comparing the indicated late and early periods. Region fixed effects and a dummy for being an initially poor country are included as indicated for each specification. Robust standard errors in parentheses. For Africa only, we do not split out by poor/rich since we have so few rich country observations in sub-Saharan Africa.

***Significant at the 1 percent level.

**Significant at the 5 percent level.

*Significant at the 10 percent level.

only 7 years to generate the cross-sectional correlation between temperature and per capita income seen in Figure 1.⁴⁵ In practice, adaptation may mitigate these effects substantially in the long run.

B. Building Estimates for the Impact of Future Climate Change

Estimating the future implications of climatic change is a difficult exercise given numerous uncertainties about the extent of climatic change and the economic effects that may ensue. Our estimates use recent historical evidence to inform the short- and medium-run consequences of temperature increases, but bridging to long-run implications is more challenging. First, countries may adapt to permanent changes in climate more successfully than they adapt to the annual or decade-long temperature

⁴⁵ Dell, Jones, and Olken (2009) consider how explicit assumptions about adaptation, convergence, and other forces over the long run can reconcile short- and long-run empirical relationships between temperature and income.

shocks that we examine empirically. Adaptation can take place at a local level but also at a global level, where new adaptive technologies may be developed that find wide-scale use.⁴⁶ Second, several potential effects of future climatic change, including potential effects on sea levels, biodiversity, and storm frequency, are not captured within our historical analysis. Third, global-scale general equilibrium effects, including adjustments in trade patterns and convergence forces, may offset asymmetric national effects on poor countries.⁴⁷

While tackling these challenges is beyond the scope of this paper, its findings do suggest important ways in which future implementations of climate-economy models could be modified to better match the historical climate-economy relationship. First, current climate-economy models are built around a relatively narrow set of channels, primarily agriculture, through which climate could impact economic activity. Our analysis finds large effects, in industrial value-added and political stability, that are not considered by most current IAM climate-economy analyses. Second, IAM approaches often build underlying sector-specific models from evidence of behavior in rich countries. Our results, whether looking at aggregate output or underlying channels, repeatedly demonstrate that poor countries experience extremely different (and negative) effects compared to rich countries, so extrapolating analyses of rich countries is likely to understate effects in poorer regions. Finally, most existing literature assumes that temperature will affect the level of output, as opposed to the growth rate of output. In our method, we consider the possibility of both level and growth effects. Because growth effects compound over time, even modest growth effects can accumulate into large income effects.

VI. Conclusion

This paper examines the historical relationship between temperature fluctuations and economic growth. We find substantial effects of temperature shocks, but only in poor countries. In poor countries, a 1°C rise in temperature in a given year reduces economic growth by 1.3 percentage points on average. The estimates further suggest that temperature shocks may affect the rate of economic growth, rather than just the level of output. However, whereas the short-run impacts appear very robust, the case for persistent growth effects in the distributed lag structure depends on the specification. Estimates using medium-run shifts from 1970 to 2000 rather than annual variation produce similar though noisy estimates, suggesting that adaptation may not undo the effects of temperature changes in the medium term.

By focusing on fluctuations in temperature, we seek to inform old debates over temperature's role in economic development and new debates over future impacts of climate change. Our findings of large effects of temperature shocks on poor countries provide counterevidence to claims that temperature does not influence national production. While higher temperatures reduce agricultural output in poor countries,

⁴⁶To investigate the possibility of global adaptation, we have looked at whether the estimated impacts of temperature become less pronounced over time. While the point estimates suggest smaller temperature impacts in more recent decades, the difference is not statistically significant. See online Appendix Tables A31 and A32.

⁴⁷A key advantage of the panel analysis in this paper is to enhance identification by sweeping out fixed effects for country and time. However, this approach by necessity eliminates the capacity to estimate global-scale effects.

we also find that they lead to reductions in industrial output and political stability. These results underscore the breadth of mechanisms underlying the climate-economy relationship and emphasize channels not usually considered in the aggregate climate literature. Further work is needed to identify precise causal mechanisms surrounding each of these channels. While teasing out the mechanisms is challenging, this paper suggests such analysis is of first-order importance, as the economic effects in poor countries appear large.

Given uncertainty over adaptation, international spillovers, technical change, and other issues, the estimates here—driven primarily from short-run fluctuations in temperature—alone cannot provide precise predictions about the estimated impacts of future climate change. The results do, however, provide clear guidance on critical economic dimensions that integrated assessment models and other attempts to think about global climate change should incorporate. A credible model should be able to match the historical moments in the data uncovered here: the stark differences between rich and poor countries, the possibility of growth effects rather than just level effects, and the possibility that climate change will affect the economy outside of agriculture. Incorporating these effects into current models of climate change will yield predictions that more closely match historical evidence about the relationship between temperature and economic performance.

REFERENCES

- Acemoglu, Daron, Simon Johnson, and James A. Robinson.** 2001. "The Colonial Origins of Comparative Development: An Empirical Investigation." *American Economic Review* 91 (5): 1369–1401.
- Acemoglu, Daron, Simon Johnson, and James A. Robinson.** 2002. "Reversal of Fortune: Geography and Institutions in the Making of the Modern World Income Distribution." *Quarterly Journal of Economics* 117 (4): 1231–94.
- Adams, Richard M., Cynthia Rosenzweig, Robert M. Peart, Joe T. Ritchie, Bruce A. McCarl, David Glyer, R. Bruce Curry, James W. Jones, Kenneth J. Boote, and L. Hartwell Allen Jr.** 1990. "Global Climate Change and US Agriculture." *Nature* 345 (6272): 219–24.
- Alesina, Alberto.** 1996. "Political Instability and Economic Growth." *Journal of Economic Growth* 1 (2): 189–211.
- Balk, Deborah, et al.** 2004. Center for International Earth Science Information Network (CIESIN), Columbia University; International Food Policy Research Institute (IFPRI), the World Bank; and Centro Internacional de Agricultura Tropical (CIAT), 2004. Global Rural-Urban Mapping Project (GRUMP), Palisades, NY: CIESIN, Columbia University. Available at <http://sedac.ciesin.columbia.edu/gpw> (accessed 2004).
- Barrios, Salvador, Luisito Bertinelli, and Eric Strobl.** 2010. "Trends in Rainfall and Economic Growth in Africa: A Neglected Cause of the African Growth Tragedy." *Review of Economics and Statistics* 92 (2): 350–66.
- Bond, Steve, Asli Leblebicioglu, and Fabio Schiantarelli.** 2010. "Capital Accumulation and Growth: A New Look at the Empirical Evidence." *Journal of Applied Econometrics* 25 (7): 1073–99.
- Boyanowsky, Ehor.** 1999. "Violence and Aggression in the Heat of Passion and in Cold Blood: The Ecs-TC Syndrome." *International Journal of Law and Psychiatry* 22 (3): 257–71.
- Brohan, P., J. J. Kennedy, I. Harris, S. F. B. Tett, and P. D. Jones.** 2006. "Uncertainty Estimates in Regional and Global Observed Temperature Changes: A New Data Set from 1850." *Journal of Geophysical Research* 111 (D12): 1–21.
- Brückner, Markus, and Antonio Ciccone.** 2011. "Rain and the Democratic Window of Opportunity." *Econometrica* 79 (3): 923–47.
- Burke, Paul J., and Andrew Leigh.** 2010. "Do Output Contractions Trigger Democratic Change?" *American Economic Journal: Macroeconomics* 2 (4): 124–57.
- Cameron, A. Colin, Jonah B. Gelbach, and Douglas L. Miller.** 2011. "Robust Inference with Multiway Clustering." *Journal of Business and Economic Statistics* 29 (2): 238–49.

- Carlsmith, J. Merrill, and Craig A. Anderson.** 1979. "Ambient Temperature and the Occurrence of Collective Violence: A New Analysis." *Journal of Personality and Social Psychology* 37 (3): 337–44.
- Ciccone, Antonio, and Marek Jarociński.** 2010. "Determinants of Economic Growth: Will Data Tell?" *American Economic Journal: Macroeconomics* 2 (4): 227–46.
- Curriero, Frank C., Karlyn S. Heiner, Jonathan M. Samet, Scott L. Zeger, Lisa Strug, Jonathan A. Patz.** 2002. "Temperature and Mortality in 11 Cities of the Eastern United States." *American Journal of Epidemiology* 155 (1): 80–87.
- Deaton, Angus, and Alan Heston.** 2010. "Understanding PPPs and PPP-based National Accounts." *American Economic Journal: Macroeconomics* 2 (4): 1–35.
- Dell, Melissa, Benjamin F. Jones, and Benjamin A. Olken.** 2009. "Temperature and Income: Reconciling New Cross-Sectional and Panel Estimates." *American Economic Review* 99 (2): 198–204.
- Dell, Melissa, Benjamin F. Jones, and Benjamin A. Olken.** 2012. "Temperature Shocks and Economic Growth: Evidence from the Last Half Century: Dataset." *American Economic Journal: Macroeconomics*. <http://dx.doi.org/10.1257/mac.4.3.66>.
- Deschenes, Olivier, and Michael Greenstone.** 2007. "The Economic Impacts of Climate Change: Evidence from Agricultural Output and Random Fluctuations in Weather." *American Economic Review* 97 (1): 354–85.
- Deschenes, Olivier, and Enrico Moretti.** 2009. "Extreme Weather Events, Mortality, and Migration." *Review of Economics and Statistics* 91 (4): 659–81.
- Field, Simon.** 1992. "The Effect of Temperature on Crime." *British Journal of Criminology* 32 (3): 340–51.
- Gallup, John Luke, and Jeffrey D. Sachs.** 2001. "The Economic Burden of Malaria." *American Journal of Tropical Medicine and Hygiene* 64 (1, 2) 85–96.
- Gallup, John Luke, Jeffrey D. Sachs, and Andrew D. Mellinger.** 1999. "Geography and Economic Development." *International Regional Science Review* 22 (2): 179–232.
- Gates, Warren.** 1967. "The Spread of Ibn Khaldun's Ideas on Climate and Culture." *Journal of the History of Ideas* 28 (3): 415–22.
- Goemans, Hein, Kristian Gleditsch, and Giacomo Chiozza.** 2006. "Archigos: A Database of Leaders 1875–2004." <http://mail.rochester.edu/~hgoemans/data>.
- Greene, William H.** 2002. *Econometric Analysis* (Fourth edition). Upper Saddle River, NJ: Prentice Hall.
- Guiteras, Raymond.** 2007. "The Impact of Climate Change on Indian Agriculture." Unpublished.
- Heston, Alan, Robert Summers, and Bettina Aten.** 2006. *Penn World Table Version 6.2*, Center for International Comparisons of Production, Income and Prices at the University of Pennsylvania, September 2006.
- Hornbeck, Richard.** Forthcoming. "The Enduring Impact of the American Dust Bowl: Short and Long-run Adjustments to Environmental Catastrophe." *American Economic Review*.
- Hsiang, Solomon M.** 2010. "Temperatures and Cyclones Strongly Associated with Economic Production in the Caribbean and Central America." *Proceedings of the National Academy of Sciences* 107 (35): 15367–72.
- Huntington, Ellsworth.** 1915. *Civilization and Climate*. New Haven: Yale University Press.
- Intergovernmental Panel on Climate Change (IPCC).** 2007. *Climate Change 2007: Synthesis Report. Contribution of Working Groups I, II, and III to the Fourth Assessment Report of the Intergovernmental Panel on Climate Change*. Geneva. <http://www.ipcc.ch/>.
- Jacob, Brian, Lars Lefgren, and Enrico Moretti.** 2007. "The Dynamics of Criminal Behavior: Evidence from Weather Shocks." *Journal of Human Resources* 42 (3): 489–527.
- Johnson, Simon, William Larson, Chris Papageorgiou, and Arvind Subramanian.** 2009. "Is Newer Better? Penn World Table Revisions and Their Impact on Growth Estimates." National Bureau of Economic Research Working Paper 15455.
- Jones, Benjamin F., and Benjamin A. Olken.** 2010. "Climate Shocks and Exports." *American Economic Review* 100 (2): 454–59.
- Link James, and Robert Pepler.** 1970. "Associated Fluctuations in Daily Temperature, Productivity and Absenteeism." *ASHRAE Transactions* Vol. 76, Part II, Paper number 2167 RP-57, 326–37.
- Maccini, Sharon, and Dean Yang.** 2009. "Under the Weather: Health, Schooling, and Economic Consequences of Early-Life Rainfall." *American Economic Review* 99 (3): 1006–26.
- Marshall, Alfred.** 1920. *Principles of Economics*. London: Macmillan and Co., (Orig. pub. 1890).
- Marshall, Monty G., and Keith Jagers.** 2004. *Polity IV Project: Political Regime Characteristics and Transitions, 1800–2002*. College Park, MD: Center for International Development and Conflict Management, University of Maryland. <http://www.systemicpeace.org/polity/polity4.htm>.

- Matsuura, Kenji, and Cort Willmott.** 2007. *Terrestrial Air Temperature and Precipitation: 1900–2006 Gridded Monthly Time Series*. Version 1.01. University of Delaware. <http://climate.geog.udel.edu/~climate/>.
- Meehl, G. A., C. Tebaldi, and D. Nychka.** 2004. "Changes in Frost Days in Simulations of Twentyfirst Century Climate." *Climate Dynamics* 23 (5): 495–511.
- Meese, G., R. Kok, M. Lewis, and D. Wyon.** 1982. "Effects of Moderate Cold and Heat Stress on Factory Workers in Southern Africa." *South African Journal of Science* 78: 189–97.
- Mendelsohn, Robert, Ariel Dinar, and Apurva Sanghi.** 2001. "The Effect of Development on the Climate Sensitivity of Agriculture." *Environment and Development Economics* 6 (1): 85–101.
- Miguel, Edward, Shanker Satyanath, and Ernest Sergenti.** 2004. "Economic Shocks and Civil Conflict: An Instrumental Variables Approach." *Journal of Political Economy* 112 (4): 725–53.
- Montesquieu, Charles de Secondat.** 1750. *The Spirit of Laws*. London: J. Nourse and P. Vaillant.
- Nicholls, Robert, and Stephen P. Leatherman, eds.** 1995. "Potential Impacts of Accelerated Sea-Level Rise on Developing Countries." *Journal of Coastal Research*, Special Issue No. 14.
- Ngo-Duc, T., J. Polcher, and K. Laval.** 2005. "A 53-year Forcing Dataset for Land Surface Models." *Journal of Geophysical Research* 110, 13.
- Nordhaus, William D.** 2006. "Geography and Macroeconomics: New Data and New Findings." *Proceedings of the National Academy of Science* 103 (10): 3510–17.
- PRIO.** 2006. Armed Conflict Data Version 4. Available at <http://new.prio.no/CSCW-Datasets/Data-on-Armed-Conflict/UppsalaPRIO-Armed-Conflicts-Dataset/>.
- Ramsey, Jerry D., and Yeong G. Kwon.** 1992. "Recommended Alert Limits for Perceptual Motor Loss in Hot Environments." *International Journal of Industrial Ergonomics* 9 (3): 245–57.
- Rodrik, Dani, Arvind Subramanian, and Francesco Trebbi.** 2004. "Institutions Rule: The Primacy of Institutions over Geography and Integration in Economic Development." *Journal of Economic Growth* 9 (2): 131–65.
- Sachs, Jeffrey D.** 2003. "Institutions Don't Rule: Direct Effects of Geography on Per Capita Income." National Bureau of Economic Research Working Paper 9490.
- Sachs, Jeffrey, and Pia Malaney.** 2002. "The Economic and Social Burden of Malaria." *Nature* 415 (6872): 680–85.
- Sachs, Jeffrey D., and Andrew M. Warner.** 1997. "Sources of Slow Growth in African Economies." *Journal of African Economies* 6 (3): 335–76.
- Seppänen, Olli, William Fisk, and D. Faulkner.** 2003. "Cost Benefit Analysis of the Night-Time Ventilative Cooling in Office Building." Paper presented at Healthy Buildings 2003 Conference, Singapore, December 8.
- Schlenker, Wolfram, W. Michael Hanemann, and Anthony C. Fisher.** 2006. "The Impact of Global Warming on US Agriculture: An Econometric Analysis of Optimal Growing Conditions." *Review of Economics and Statistics* 88 (1): 113–25.
- Schlenker, Wolfram, and Michael J. Roberts.** 2006. "Nonlinear Effects of Weather on Corn Yields." *Review of Agricultural Economics* 28 (3): 391–98.
- Schlenker, Wolfram, and Michael J. Roberts.** 2009. "Nonlinear Temperature Effects Indicate Severe Damages to US Crop Yields under Climate Change." *Proceedings of the National Academy of Sciences* 106 (37): 15594–98.
- Stern, Nicholas.** 2007. *The Economics of Climate Change: The Stern Review*. Cambridge, UK: Cambridge University Press.
- Tihonen, Jari, Pirkko Räsänen, and Helinä Hakko.** 1997. "Seasonal Variation in The Occurrence of Homicide in Finland." *American Journal of Psychiatry* 154 (12): 1711–14.
- US Riot Commission.** 1968. *Report of the National Advisory Commission on Civil Disorders*. New York: Bantam Books.
- World Bank.** 2007. 2007 World Development Indicators Online Edition. <http://data.worldbank.org/products/data-books/WDI-2007>. (accessed April 2007).
- Wyon, David.** 1976. "Assessing the Effects of Moderate Heat and Cold Stress on Human Efficiency." In *Proceedings of the Symposium, Factories for Profit—Environmental Design*. Pretoria, South Africa: National Building Research Institute.
- Young, Alwyn.** 2009. "The African Growth Miracle." Unpublished.
- Zivin, Joshua Graff, and Matthew J. Neidell.** 2010. "Temperature and the Allocation of Time: Implications for Climate Change." National Bureau of Economic Research Working Paper 15717.

This article has been cited by:

1. Raymond Guiteras, Amir Jina, A. Mushfiq Mobarak. 2015. Satellites, Self-reports, and Submersion: Exposure to Floods in Bangladesh. *American Economic Review* **105**:5, 232-236. [[Abstract](#)] [[View PDF article](#)] [[PDF with links](#)]
2. Samuel Bazzi, Christopher Blattman. 2014. Economic Shocks and Conflict: Evidence from Commodity Prices. *American Economic Journal: Macroeconomics* **6**:4, 1-38. [[Abstract](#)] [[View PDF article](#)] [[PDF with links](#)]
3. Melissa Dell, Benjamin F. Jones, Benjamin A. Olken. 2014. What Do We Learn from the Weather? The New Climate-Economy Literature. *Journal of Economic Literature* **52**:3, 740-798. [[Abstract](#)] [[View PDF article](#)] [[PDF with links](#)]
4. Richard Hornbeck, Pinar Keskin. 2014. The Historically Evolving Impact of the Ogallala Aquifer: Agricultural Adaptation to Groundwater and Drought. *American Economic Journal: Applied Economics* **6**:1, 190-219. [[Abstract](#)] [[View PDF article](#)] [[PDF with links](#)]
5. Robert S. Pindyck. 2013. Climate Change Policy: What Do the Models Tell Us?. *Journal of Economic Literature* **51**:3, 860-872. [[Abstract](#)] [[View PDF article](#)] [[PDF with links](#)]